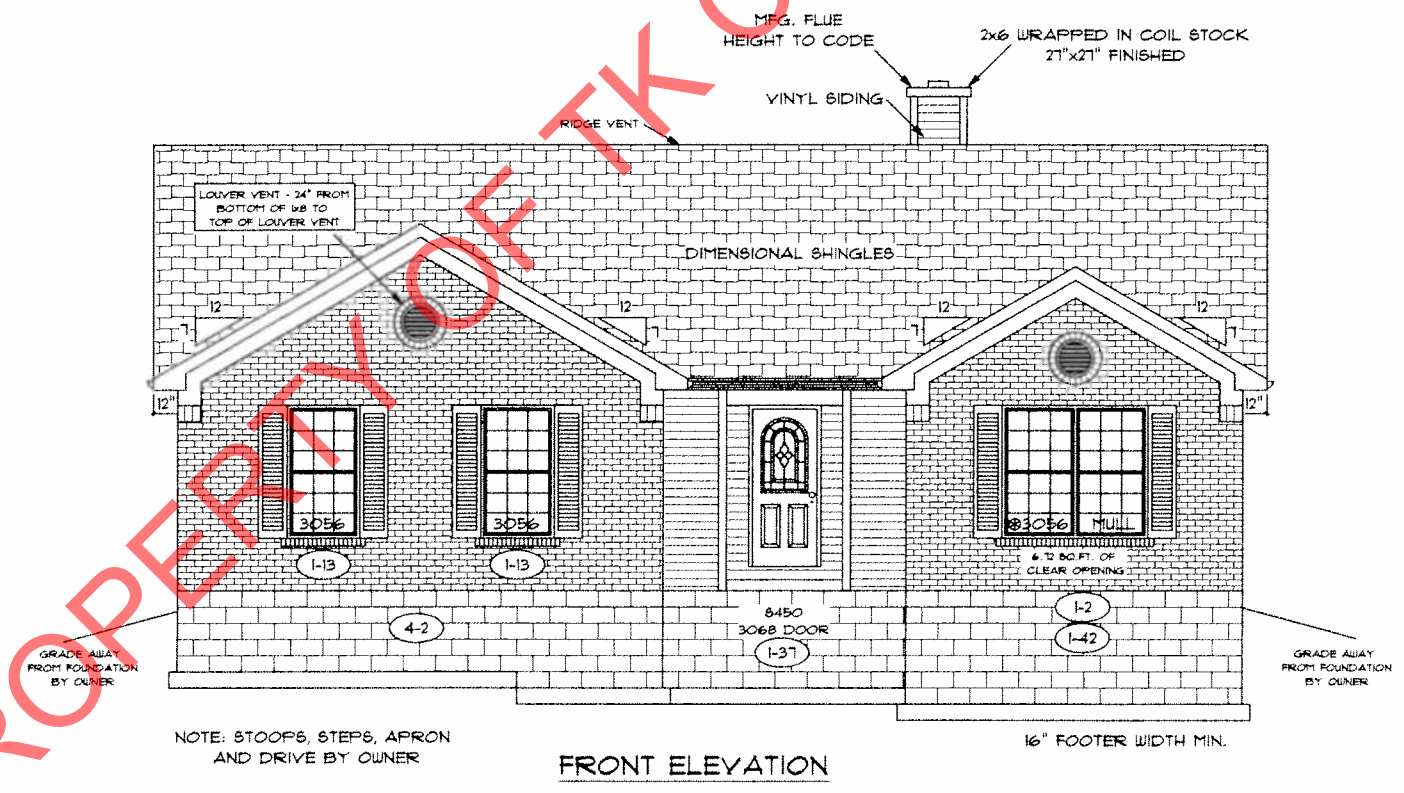
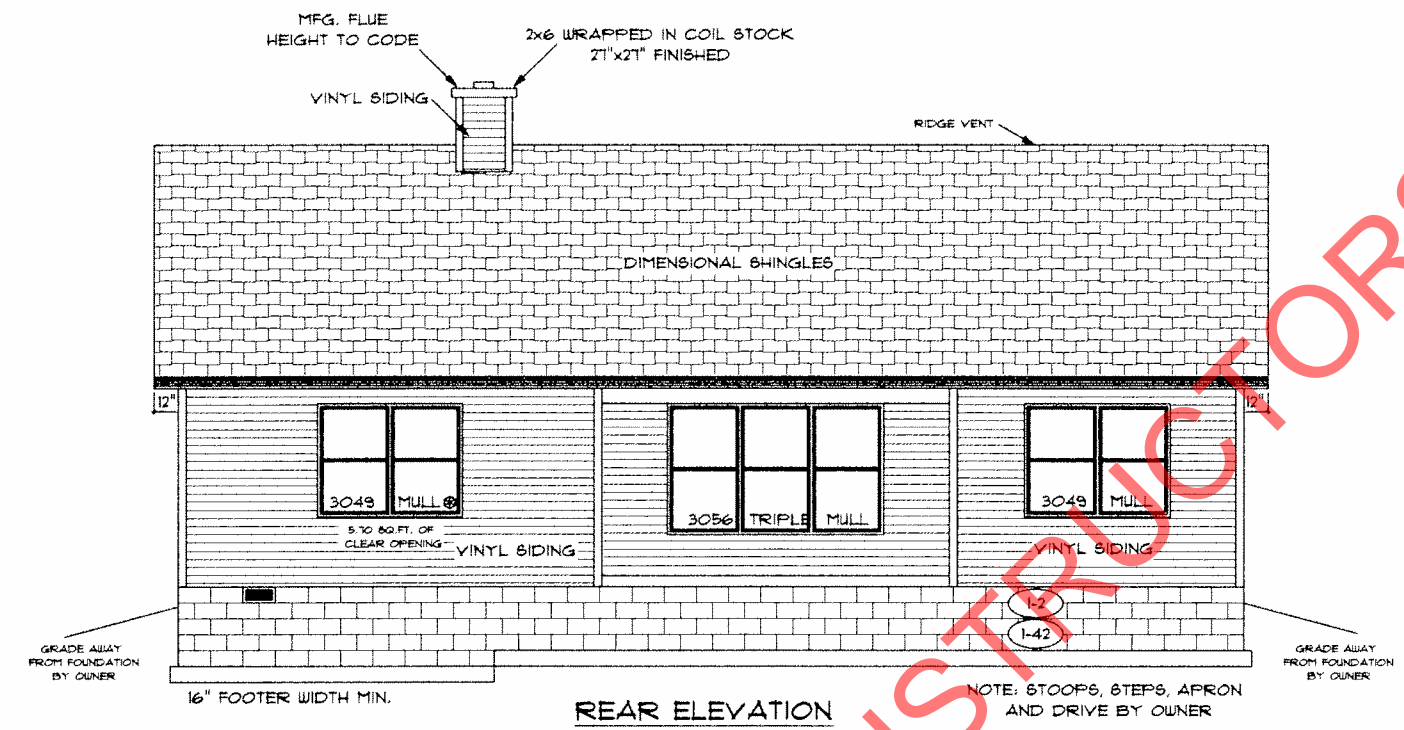


marked up for P.O.'s
6-30-16



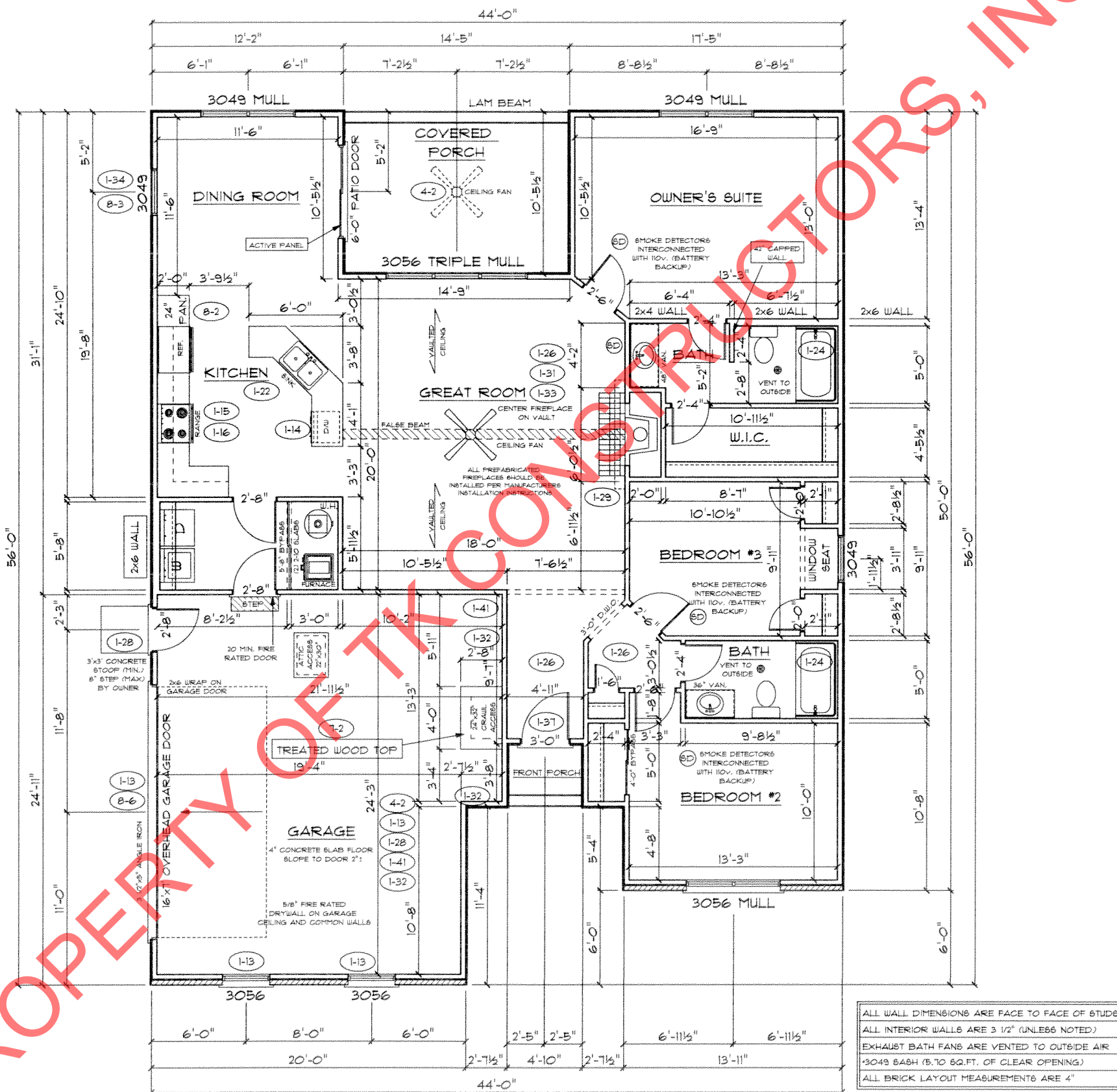
PROPERTY OF TK CONSTRUCTORS, INC.

FLOOR PLAN

| | |
|-----------------------|-------|
| Total Living Sq.ft. | 1,581 |
| Garage | 512 |
| Total Sq.ft. | 2,093 |
| Excluding Front Porch | 19 |
| Excluding Rear Porch | 150 |

| ANDERSEN WINDOW SCHEDULE - 200 SERIES - | |
|--|-----------|
| ANDERSEN MODEL NO. | R.O. SIZE |
| 3030 | 36" x 36" |
| 3040 | 36" x 48" |
| 3049* | 36" x 51" |
| 3056* | 36" x 66" |
| 3060* | 36" x 72" |
| 3049 MULL* | 73" x 51" |
| 3056 MULL* | 73" x 66" |
| 3060 MULL* | 73" x 72" |
| ANDERSEN SLIDING DOOR R.O. 72 3/4" x 82 1/8" | |
| 3'-0" FRONT DOOR R.O. 38 3/8" x 82 1/2" (1-37) | |
| 3'-0" FRONT DOOR WITH (1) SIDELITE R.O. 51 7/8" x 82 1/2" | |
| 3'-0" FRONT DOOR WITH (2) SIDELITES R.O. 65 3/8" x 82 1/2" | |
| R.O. FOR BI-FOLD DOORS USING DRYWALL JAMB FACING = 1 1/4" + DOOR SIZE x (81 1/2") | |
| R.O. FOR BYPASS DOORS USING DRYWALL JAMB FACING MAKE SAME AS BOTH DOORS ADDED TOGETHER | |
| ALL INTERIOR DOORS SIZE + 2" TO WIDTH x 82 1/2" HIGH | |
| R.O. POCKET DOOR (2x DOOR WIDTH + 1") x 85" HIGH | |

* - DENOTES OPENING MEETS
EGRESS REQUIREMENTS



ALL WALL DIMENSIONS ARE FACE TO FACE OF STUDS
 ALL INTERIOR WALLS ARE 3 1/2" (UNLESS NOTED)
 EXHAUST BATH FANS ARE VENTED TO OUTSIDE AIR
 *3049 SASH (5.10 SQ.FT. OF CLEAR OPENING)
 ALL BRICK LAYOUT MEASUREMENTS ARE 4"