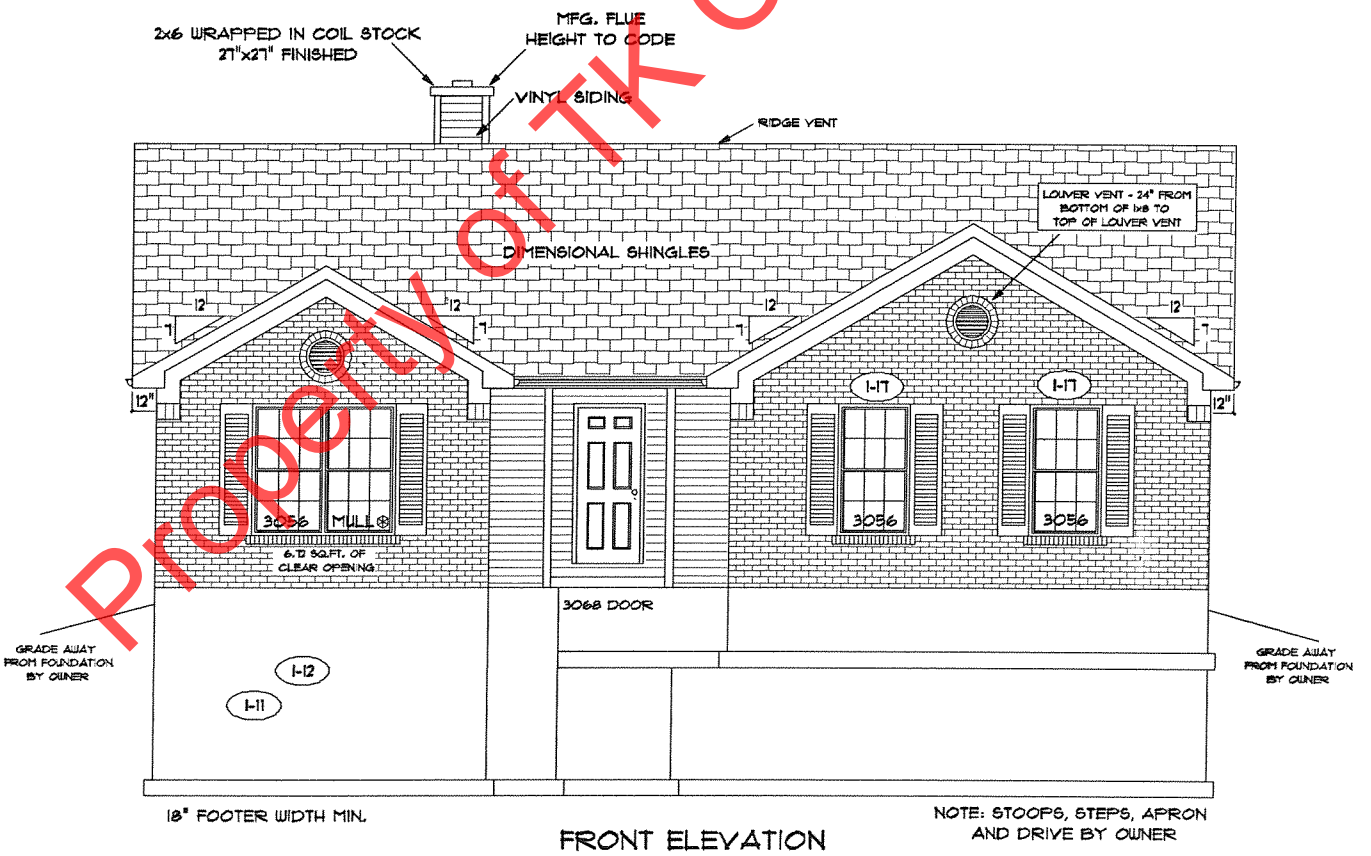



REAR ELEVATION



FRONT ELEVATION

PAGE NO: **1B**

ADDENDUM 1  
 VER: 072210  
 DRAWING BY: SES  
 SCALE: 1/8 IN.=1 FT.


  
 CONSTRUCTORS

DATE: January 24, 2013  
 JOB NO.: 110-13-0003

TK CONSTRUCTORS  
ROCKFORD

FLOOR PLAN

Total Living Sq.ft.	1,581
Garage	472
Total Sq.ft.	2,053
Excluding Front Porch	19
Excluding Rear Porch	150

ANDERSEN WINDOW SCHEDULE  
- 200 SERIES -

ANDERSEN MODEL NO.	R.O. SIZE
3030	36" x 36"
3040	36" x 48"
3049*	36" x 51"
3056*	36" x 66"
3060*	36" x 72"
3049 MULL*	73" x 51"
3056 MULL*	73" x 66"
3060 MULL*	73" x 72"

ANDERSEN SLIDING DOOR R.O. 72 3/4" x 82 1/8"
3'-0" FRONT DOOR R.O. 38 3/8" x 82 1/2"
3'-0" FRONT DOOR WITH (1) SIDELITE R.O. 51 7/8" x 82 1/2"
3'-0" FRONT DOOR WITH (2) SIDELITES R.O. 65 3/8" x 82 1/2"
R.O. FOR BI-FOLD DOORS USING DRYWALL JAMB FACING = 1 1/4" + DOOR SIZE x (81 1/2")
R.O. FOR BYPASS DOORS USING DRYWALL JAMB FACING MAKE SAME AS BOTH DOORS ADDED TOGETHER
ALL INTERIOR DOORS SIZE + 2" TO WIDTH x 82 1/2" HIGH
R.O. POCKET DOOR (2x DOOR WIDTH + 1") x 85" HIGH

\* - DENOTES OPENING MEETS  
EGRESS REQUIREMENTS

